



**RHONDDA CYNON TAF**

**RHONDDA CYNON TAF COUNTY BOROUGH COUNCIL**

**DEMOCRATIC SERVICES COMMITTEE**

**27<sup>TH</sup> APRIL 2023**

**CENSUS 2021 RCT AND WARD LEVEL DATA**

**REPORT OF THE HEAD OF DEMOCRATIC SERVICES**

**1. PURPOSE OF REPORT**

The purpose of the report is to provide Members with details of the provision of Census data available, including ward level data and how such data can be made available going forward for Members to utilise.

**2. RECOMMENDATIONS**

2.1 It is recommended that Members:

- (i) Acknowledge the Data information currently available for Members to access
- (ii) Support the developments taken forward with the Data online library
- (iii) Support that the 'Members Portal Champions' work with data colleagues to support developments of the data library to ensure that it is fit for purpose.

**3. BACKGROUND - CENSUS 2021 RESULTS**

3.1 The 2021 census asked people about topics including their background (such as ethnicity, religion, and sexual orientation), housing, health, and work.

3.2 Census data provides a level of detail that isn't possible from other government surveys – information is available about small population groups, and for small geographic areas. Census data contributes to policy decisions and provides a benchmark for other official statistics.

3.3 The 2021 census data is being published for England and Wales across 2022 and 2023.

3.4 This report outlines how Members can access the Census data from a number of external sources and provides further information about future access to data through a data library

**4. RHONDDA CYNON TAF CENSUS 2021 DATA**

- 4.1 The link below provides a summary of the key data released for Rhondda Cynon Taf. It covers the characteristics of people and households in Rhondda Cynon Taf, more data and geographies will be added over time.  
[2021 Census Profile for areas in England and Wales - Nomis \(nomisweb.co.uk\)](https://www.nomisweb.co.uk/census/2021/summary)

**How has life changed since 2011?**

- 4.2 The ONS have put together an article that compares some key data changes that have taken place between the 2011 and 2021 Census, for example, between the last two censuses the population of Rhondda Cynon Taf increased by 1.4%, from just over 234,400 in 2011 to around 237,700 in 2021.  
[How life has changed in Rhondda Cynon Taf: Census 2021 \(ons.gov.uk\)](https://www.ons.gov.uk/peoplepopulationandcommunity/healthandlife/articles/2021/03/2021-census-how-life-has-changed-in-rhondda-cynon-taf)

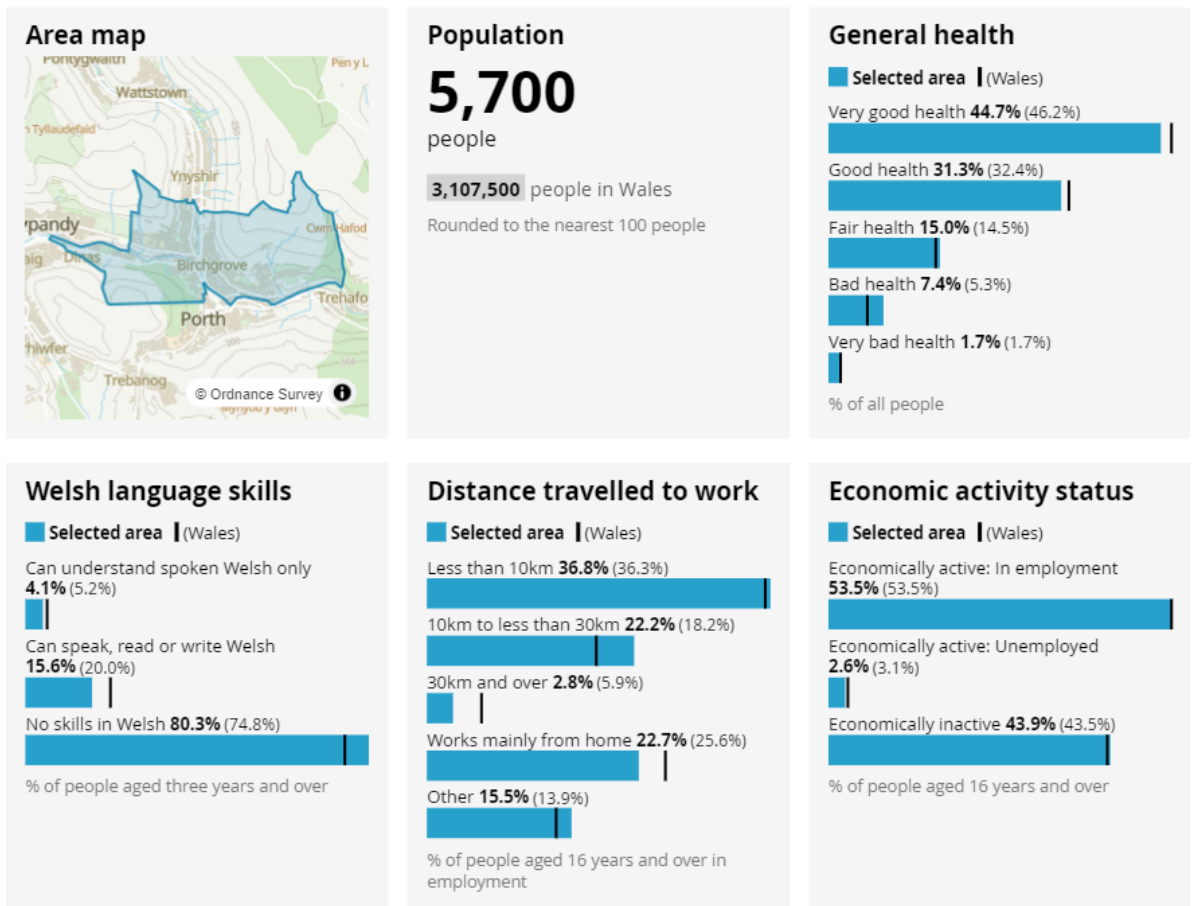
**Accessing facts and figures within Member Ward areas?**

- 4.3 There are a number of ways that Members can view data at the Ward level for a range of data. Simply search a chosen postcode or area name on the below link, and data for that area from some of the topic summaries already released will be available.

[Build a custom area profile - Census 2021, ONS](https://www.ons.gov.uk/peoplepopulationandcommunity/healthandlife/articles/2021/03/build-a-custom-area-profile-census-2021)

- 4.4 As the title of the link suggests, Members can build a profile, by clicking on the data required for the area. The image below shows Porth as an example, with

a number of summary datasets chosen;

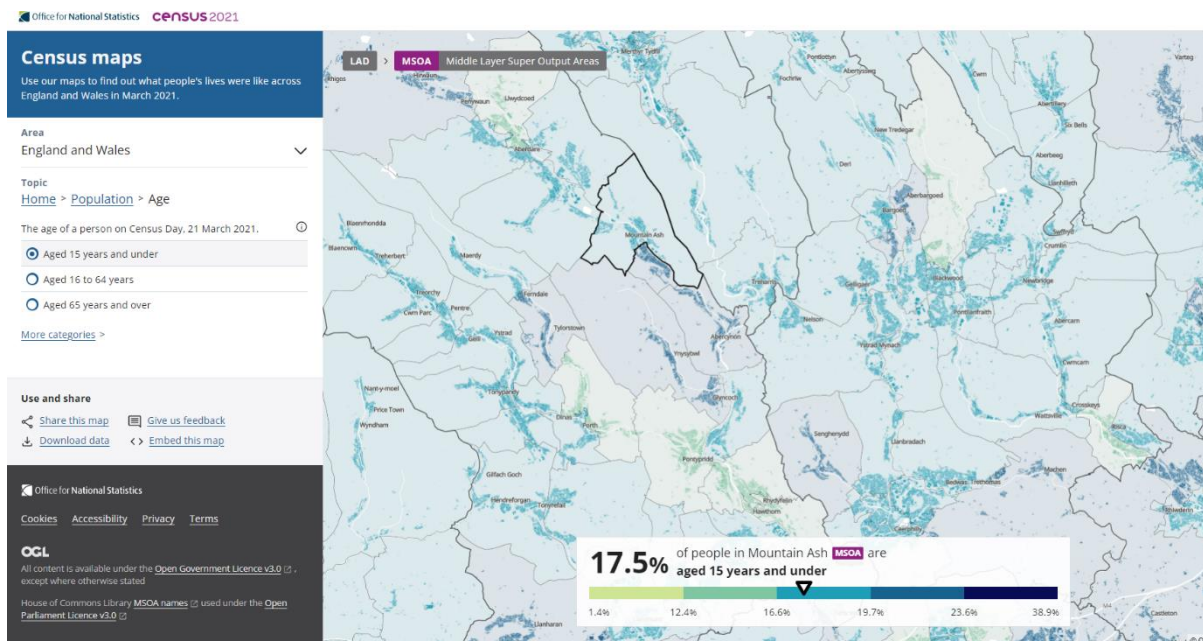


Source: Office for National Statistics - Census 2021

- 4.5 In addition to topic summaries available in the tool above, more detailed Ward data is available at the following link. .  
[Ward data, England and Wales: Census 2021 - Office for National Statistics \(ons.gov.uk\)](https://ons.gov.uk/wales/census/2021/ward-data)

### Interactive Map

- 4.6 The ONS have created an interactive tool to explore Census 2021 topic summary data down to a neighbourhood level.  
[Census Maps - Census 2021 data interactive, ONS](https://ons.gov.uk/census/2021/census-maps)



## 5 FUTURE ARRANGEMENTS FOR ACCESS TO DATA

- 5.1 The Council have resourced a ‘Community Data Analyst’ who sits within the Councils Consultation and Engagement team. This officer assists departments within the Council to acquire and interpret data to assist in service delivery and policy making.
- 5.2 As part of the role, the officer is also developing an online data Library, which will host a range of data to assist both Council Officers and Members in the future.
- 5.3 The data library is in very early development stages with colleagues working with the Online Development team to create a suitable online platform to host the data information, ensuring the system is current and easy to navigate for all those wish to use it.
- 5.4 It is proposed that to help support the developments of the data library the Democratic Services Committee ‘Member Portal Champions’ test the system at an appropriate time in its development to ensure its fit for purpose.
- 5.5 It is the intention that as the data library will be a web based system, the library will be embedded within the Members Portal, again allowing the portal to become the ‘one stop shop’ for all Members information and requests going forward.
- 5.6 In the interim, if Members wish to receive any further detail in relation to their Ward, Members are advised to email the Member Services inbox, where officers will direct the request appropriately to the Community Data Analyst.

## 6 EQUALITY AND DIVERSITY IMPLICATIONS / SOCIO-ECONOMIC DUTY

- 6.1 The role of an Elected Member is integral to the effective running of the Council and it is essential that all Members are provided with any support necessary to undertake their role. The Council have pledged to become a diverse Council and therefore it is important that all Members and any future candidates looking to stand as an Elected Member feel safe in taking forward this role.

## **7 WELSH LANGUAGE IMPLICATIONS**

- 7.1 There are no language implications associated with this report.

## **8 CONSULTATION**

- 8.1 None required

## **9. FINANCIAL IMPLICATION(S)**

- 9.1 There are no financial implications aligned to this report.

## **10. LEGAL IMPLICATIONS**

- 10.1 There are no legal implications aligned to this report

## **11. LINKS TO CORPORATE AND NATIONAL PRIORITIES AND THE WELL-BEING OF FUTURE GENERATIONS ACT.**

- 11.1 The role of an Elected Member links to the Corporate Plan priorities and supporting Members to undertake their role through access to data will assist both Members and residents.

## **12 CONCLUSION**

- 12.1 The provision of access to data will help Members have a greater understanding of their ward and the makeup of the County Borough.

**LOCAL GOVERNMENT ACT 1972**

**AS AMENDED BY**

**THE LOCAL GOVERNMENT (ACCESS TO INFORMATION) ACT 1985**

**RHONDDA CYNON TAF COUNTY BOROUGH COUNCIL**

**DEMOCRATIC SERVICES COMMITTEE**

**REPORT OF THE SERVICE DIRECTOR, DEMOCRATIC SERVICES &  
COMMUNICATION**

Free Standing Matter.